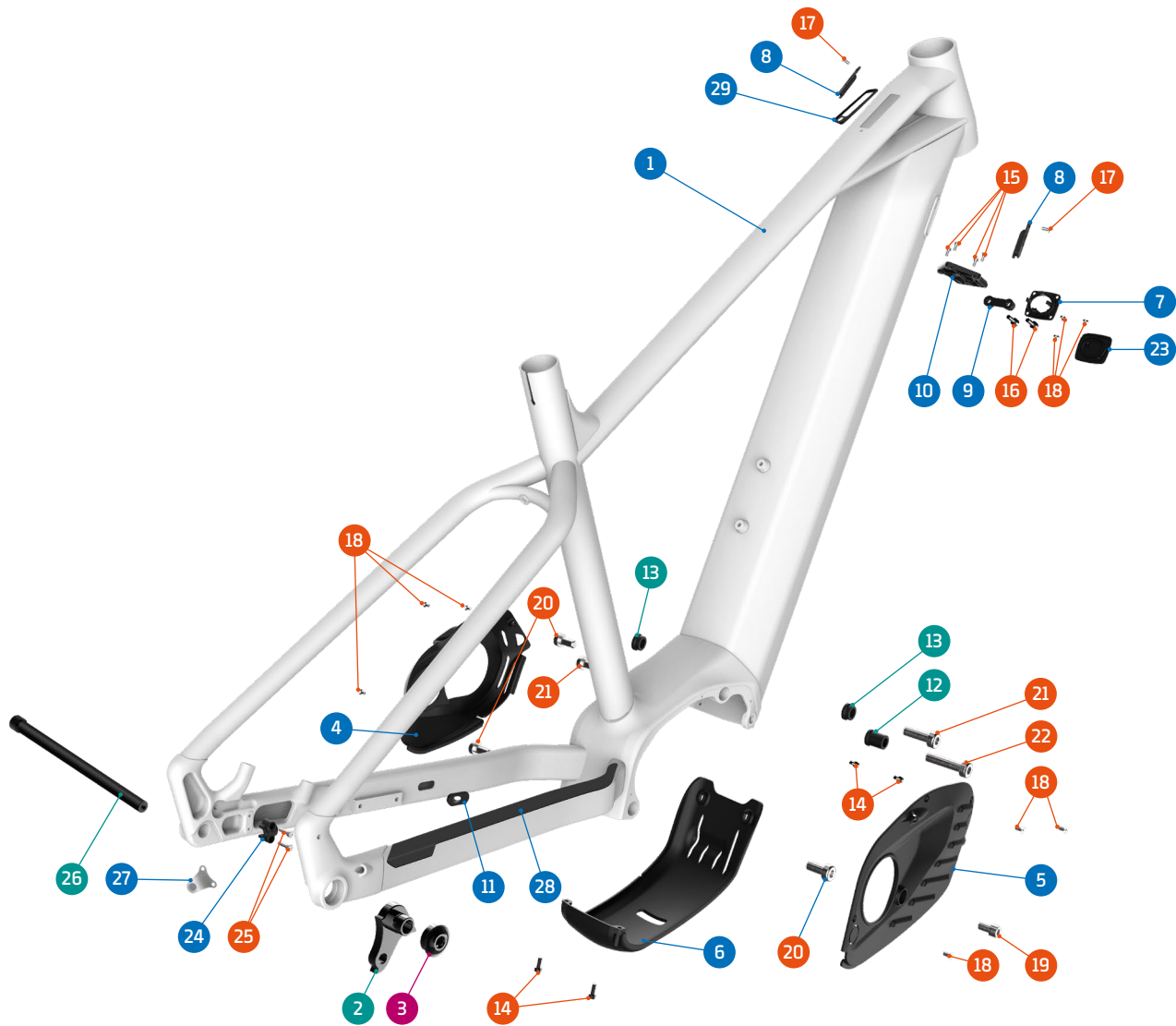


PRIME R / PRIME RX

750WH



- Grease
- Threadlocker
- Grease + Threadlocker

Apply grease to the shaft, and locker to the threads

ITEM No.	DESCRIPTION	QTY.	PART NUMBER	TORQUE
1	FRAME	1		
2	HANGER	1	SET 1	
3	HANGER NUT	1	SET 1 / 099.16011	4Nm
4	MOTOR COVER, LEFT	1	099.20022	
5	MOTOR COVER, RIGHT	1	099.20023	
6	MOTOR COVER, LOWER	1	099.22058	
7	CHARGER PLUG	1	099.22056	
8	CABLE GUIDE	2	SET 2	
9	UPPER EXT. BATTERY CLAMP	1	099.20071	
10	PT750 HOLDER	1	099.22043	
11	CABLE RUBBER	1	989.13010	
12	MOTOR SPACER 16.8MM	1	SET 3	
13	MOTOR SPACER 6.8MM	2	SET 3	
14	SCREW BOLT	4	099.15032	3Nm
15	SCREW BOLT	4	099.20021	3Nm

ITEM No.	DESCRIPTION	QTY.	PART NUMBER	TORQUE
16	SCREW BOLT	2		3Nm
17	SCREW BLOT	2	SET 2	3Nm
18	SCREW BLOT	9		3Nm
19	SCREW BOLT	1		4Nm
20	MOTOR BOLT (T40 18L)	3	SET 4	15Nm
21	MOTOR BOLT (T40 25L)	2	SET 4	15Nm
22	MOTOR BOLT (T40 35L)	1	SET 4	15Nm
23	CHARGER COVER	1	099.22055	
24	SLIM SENSOR CLAMP	1	099.22042	
25	SCREW BOLT	2		0,8Nm
26	REAR AXLE	1	112.90022	
27	SPEED SENSOR BOSCH ROTOR MAGNET	1	124.20401	
28	CHAINSTAY PROTECTOR	1	099.21002	
29	TOP TUBE RUBBER	1	099.23035	

SET 1

HANGER M068 + NUT


SET 2

CABLE GUIDE KIT 3



PART NUMBER	DESCRIPTION	COMPONENTS
099.00055	SET 1: HANGER M068 + NUT	HANGER (x1) / HANGER NUT (x1)
099.19010	SET 2: CABLE GUIDE + SCREW BOLT	CABLE GUIDE (x2) / SCREW BOLT (x2)
099.22045	SET 3: MOTOR SPACERS SET	MOTOR SPACER, 6.8 (x2) / MOTOR SPACER, 16.8 (x1)
099.22054	SET 4: MOTOR BOLTS SET	SCREW BOLT MB-T40-18L (x3) / SCREW BOLT MB-T40-35L (x1) / SCREW BOLT MB-T40-25L (x1)
125.19016	KICKSTAND	
099.21031	FENDER KIT	
099.21032	REAR PANNIER RACK	
099.21033	FRONT LIGHT	
099.21034	REAR LIGHT	