

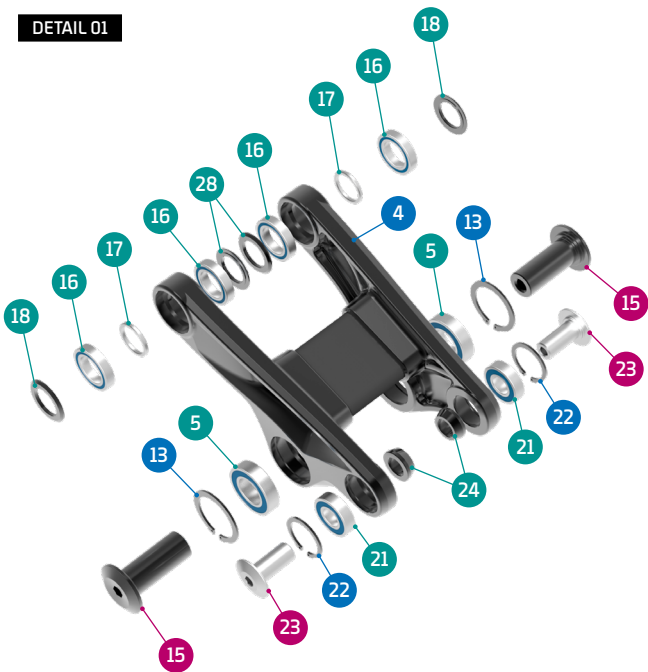
- Grease
- Threadlocker
- Grease + Threadlocker

Apply grease to the shaft, and locker to the threads

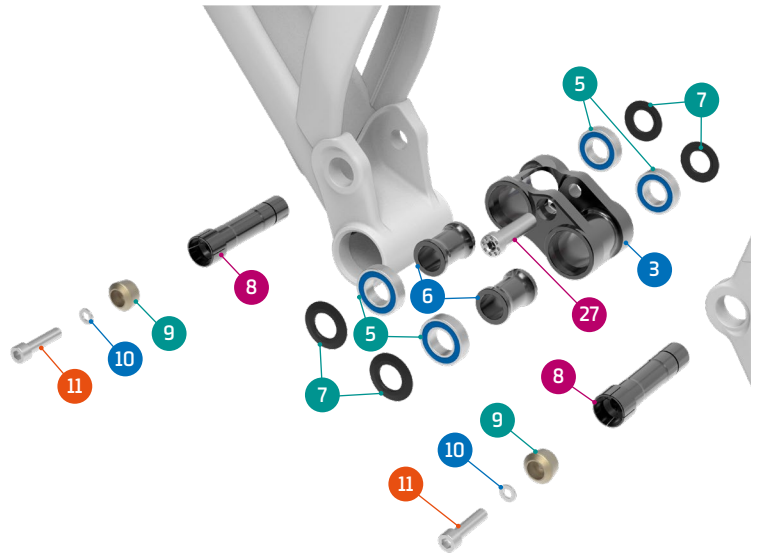
ITEM No.	DESCRIPTION	QTY.	PART NUMBER	TORQUE
1	FRONT TRIANGLE	1		
2	REAR TRIANGLE	1		
3	LOWER LINK	1	099.18028	
4	UPPER LINK	1		
5	BEARING, 28x15x7	6	SET 1	
6	SPACER, 15x22x31	2	SET 4	
7	SPACER, 15x27x2	4	SET 4	
8	MAIN AXLE, 15x73L	2	SET 4	12Nm
9	TAPER NUT	2	SET 4	
10	SPACER	2	SET 4	
11	SCREW BOLT M6x25	2	SET 4	10Nm
12	SPACER, 15x22x3	2	SET 3	
13	C-RING	2	SET 3	
14	M8 THREAD AXLE	1	SET 3	
15	LINK AXLE	2	SET 3	11Nm
16	BEARING, 24X15X5	4	SET 1	

ITEM No.	DESCRIPTION	QTY.	PART NUMBER	TORQUE
17	SPACER, 15x19x2t	2	SET 3	
18	SPACER, 15x27x2	4	SET 3	
19	PIVOT AXLE, 26MM	2	SET 3	12Nm
20	PIVOT AXLE, M12	2	SET 3	
21	BEARING, 10x22x6	2	SET 1	
22	C-RING	2	SET 3	
23	SHOCK BOLT	2	SET 2	8Nm
24	SPACER, 10x17x6	2	SET 2	
25	HANGER	1	SET 5	
26	HANGER NUT	1	099.16011	
27	SLEEVE BOLT	1	SET 2	16Nm
28	CABLE ADAPTOR	1		
29	CABLE GUIDE	3	SET 6	
30	SCREW BOLT M3x10	3	SET 6	3Nm
31	REAR AXLE, 12X148 P1.75 L180	1	112.90022	
32	CHAINSTAY PROTECTOR	1	099.21001	

DETAIL 01



DETAIL 02



SET 1

ZERO BEARING KIT 14



SET 2

SHOCK HARDWARE ZERO 10



SET 3

UPPER LINK KIT 20



SET 4

LOWER LINK KIT 20



SET 5

HANGER M068 + NUT



PART NUMBER	DESCRIPTION	COMPONENTS
099.18100	SET 1: ZERO BEARING KIT 14	BEARING 6902V-2RS, 28x15x7 (x6) / BEARING 6900V-2RS, 10x22x6 (x2) / BEARING 6802V-2RS, 24X15X5 (x4)
099.18102	SET 2: SHOCK HARDWARE ZERO 10	SPACER, 10x17x6 (x2) / SHOCK BOLT (x2) / SLEEVE BOLT (x1)
099.18103	SET 3: UPPER LINK KIT 20	SPACER, 15x22x3 (x2) / LINK AXLE (x2) / M8 THREAD AXLE (x1) / C-RING (x2) / C-RING (x2) / SPACER, 15x19x2t (x2) / SPACER, 15x27x2 (x4) / PIVOT AXLE, 26MM (x2) / PIVOT AXLE, M12 (x2)
099.18104	SET 4: LOWER LINK KIT 20	SPACER, 15x22x31 (x2) / SPACER, 15x27x2 (x4) / MAIN AXLE, 15x73L (x2) / SPACER (x2) / TAPER NUT (x2) / SCREW BOLT (x2)
099.00055	SET 5: HANGER M068 + NUT	HANGER M068 (x1) / HANGER NUT (x1)
099.19010	SET 6: CABLE GUIDE KIT 3	CABLE GUIDE (x1) / SCREW BOLT (x1)
099.19101	GEO KIT FOXY 29 - HEADSET CUPS +/- 1° SIZE S	TOP CUP 1° SIZE S (x1) / LOW CUP 1° (x1) / TOP CUP 0° (x1) / LOW CUP 0° (x1) / HEADSET ONOFF TITAN TAPPED (x1)
099.19102	GEO KIT FOXY 29 - HEADSET CUPS +/- 1° SIZE M	TOP CUP 1° SIZE M (x1) / LOW CUP 1° (x1) / TOP CUP 0° (x1) / LOW CUP 0° (x1) / HEADSET ONOFF TITAN TAPPED (x1)
099.19103	GEO KIT FOXY 29 - HEADSET CUPS +/- 1° SIZE L	TOP CUP 1° SIZE L (x1) / LOW CUP 1° (x1) / TOP CUP 0° (x1) / LOW CUP 0° (x1) / HEADSET ONOFF TITAN TAPPED (x1)
099.19105	GEO KIT FOXY 29 - HEADSET CUPS +/- 1° SIZE XL	TOP CUP 1° SIZE XL (x1) / LOW CUP 1° (x1) / TOP CUP 0° (x1) / LOW CUP 0° (x1) / HEADSET ONOFF TITAN TAPPED (x1)