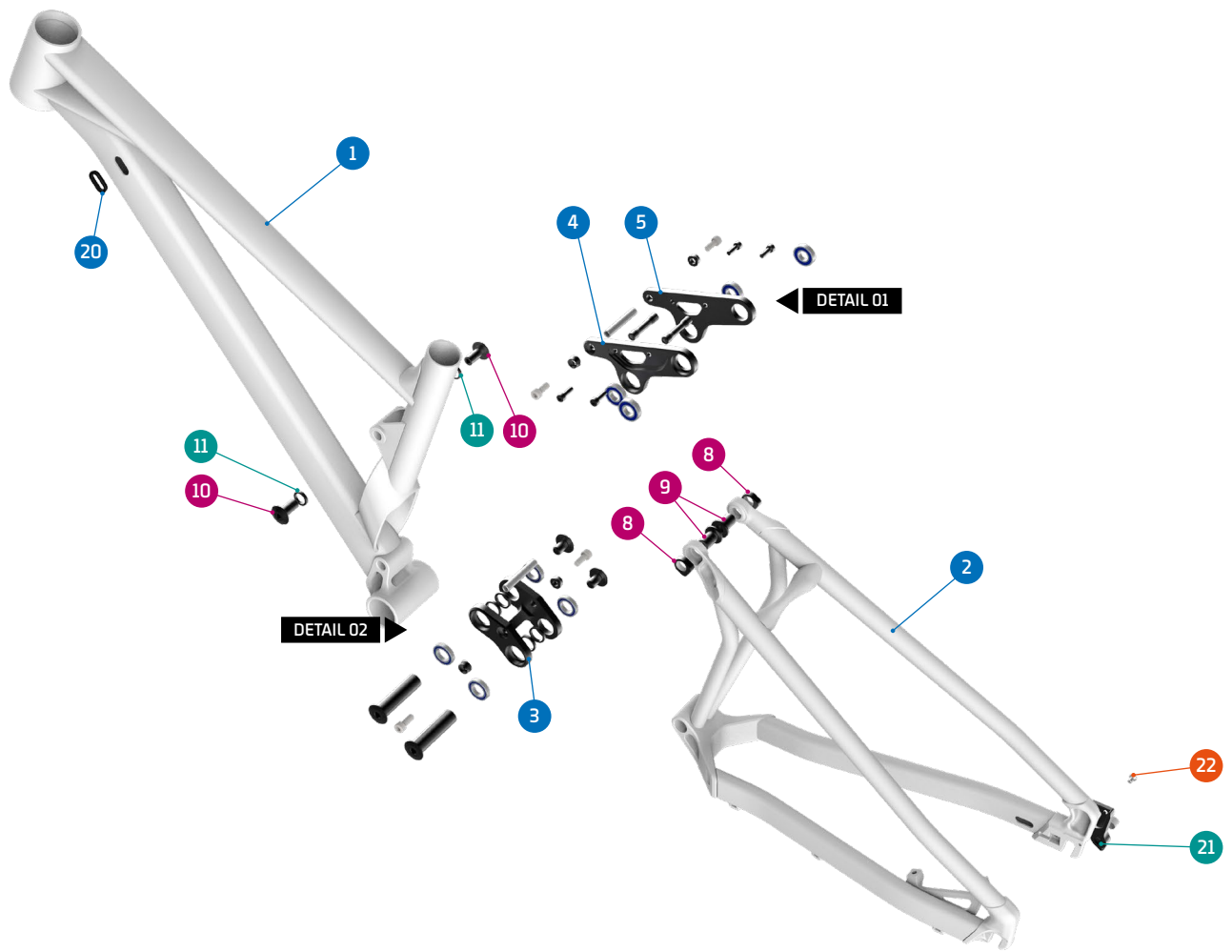


FACTOR 26 / 24



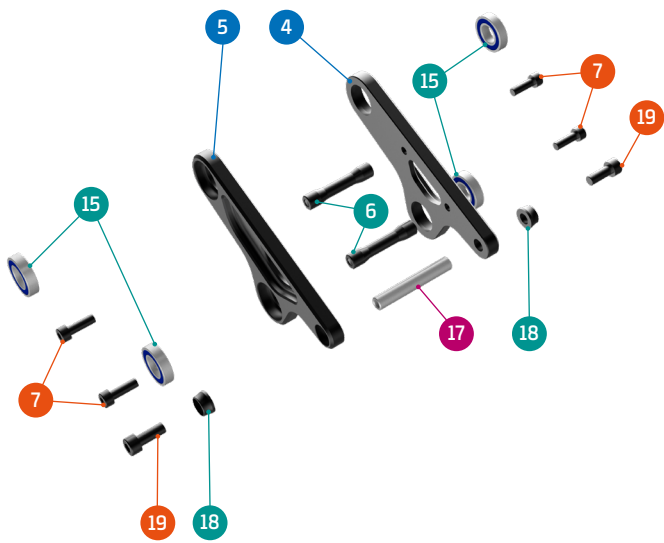
- Grease
- Threadlocker
- Grease + Threadlocker

Apply grease to the shaft, and locker to the threads

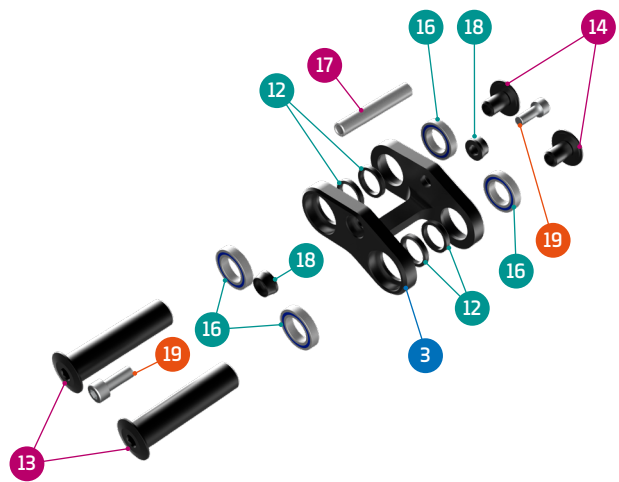
ITEM No.	DESCRIPTION	QTY.	PART NUMBER	TORQUE
1	FRONT TRIANGLE	1		
2	REAR TRIANGLE	1		
3	LOWER LINK	1	099.21037	
4	LEFT UPPER LINK	1	099.21035	
5	RIGHT UPPER LINK	1	099.21035	
6	SPACER	2	SET 3	
7	SCREW BOLT M5X16MM	4	SET 3	6Nm
8	NUT	2	SET 3	
9	PIVOT AXLE M12	2	SET 3	12Nm
10	SHOCK BOLT	2	SET 3	12Nm
11	SPACER	2	SET 3	

ITEM No.	DESCRIPTION	QTY.	PART NUMBER	TORQUE
12	SPACER	4	SET 4	
13	MAIN AXLE 15X60	2	SET 4	12Nm
14	SCREW BOLT M10	2	SET 4	12Nm
15	BEARING, 28X12X7	4	SET 1	
16	BEARING, 24X15X5	4	SET 1	
17	SHOCK AXLE	2	SET 2	
18	SPACER	4	SET 2	
19	SHOCK BOLT	4	SET 2	8Nm
20	CABLE RUBBER	2	099.21022	
21	HANGER	1	SET 5	
22	HANGER BOLT	1	SET 5	3Nm

DETAIL 01



DETAIL 02



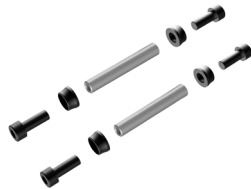
SET 1

ZERO BEARING KIT 24



SET 2

SHOCK HARDWARE KIT 15



SET 3

UPPER LINK KIT 29



SET 4

LOWER LINK KIT 27



SET 5

HANGER M073



PART NUMBER	DESCRIPTION	COMPONENTS
099.21101	SET 1: ZERO BEARING KIT 24	BEARING 6901V-2RS, 28X12X7 (x4) / BEARING 6802V-2RS, 24X15X5 (x4)
099.21201	SET 2: SHOCK HARDWARE KIT 15	SHOCK AXLE (x2) / SPACER (x4) / SHOCK BOLT (x4)
099.21301	SET 3: UPPER LINK KIT	SPACER (x2) / SCREW BOLT M5X16MM (x4) / NUT (x2) / PIVOT AXLE M12 (x2) / BOLT AXLE (x2) / SPACER (x2)
099.21401	SET 4: LOWER LINK KIT	SPACER (x4) / MAIN AXLE 15X60 (x2) / SCREW BOLT M10 (x2)
099.00061	SET 5: HANGER M073	HANGER (x1) / HANGER BOLT (x1)