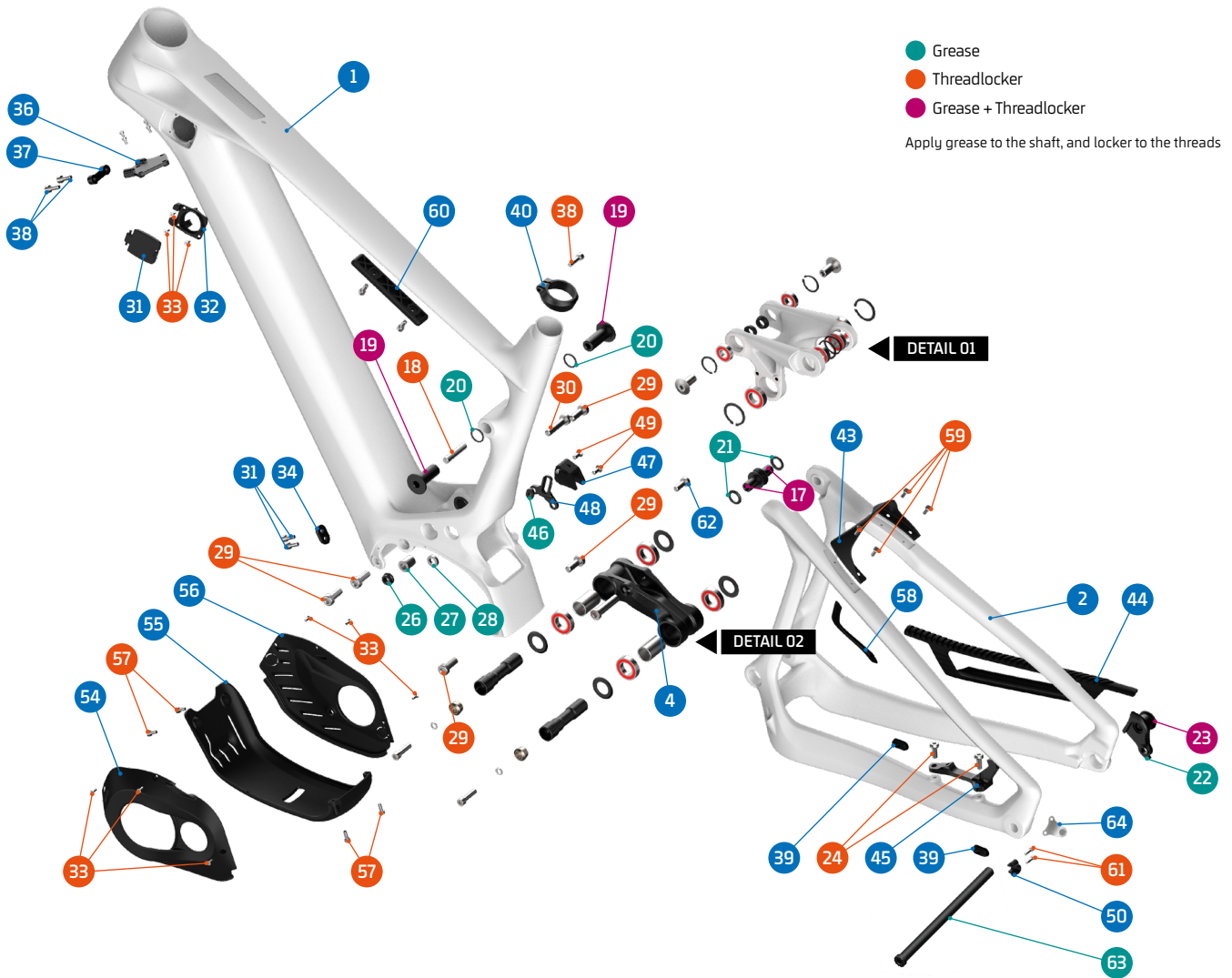


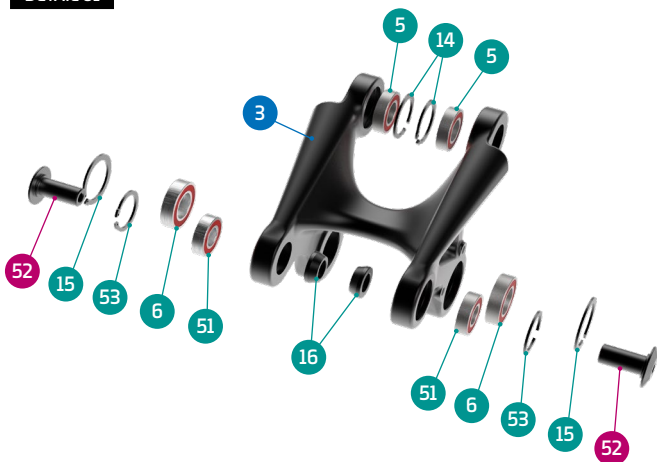
CRAFTY CARBON



ITEM No.	DESCRIPTION	QTY.	PART NUMBER	TORQUE
1	FRONT TRIANGLE	1		
2	REAR TRIANGLE	1		
3	UPPER LINK	1		
4	LOWER LINK	1	099.220040	
5	BEARING, 12X24X6 (6901V-2RS)	2	SET 1	
6	BEARING, 28x15x7 (6902V-2RS)	2	SET 1	
7	BEARING, 30x17x7 (6903V-2RS)	4	SET 1	
8	SPACER, 15x27x2	4	SET 4	
9	MAIN PIVOT AXLE, 17X60	2	SET 4	12Nm
10	SPACER, 17x22x30L	2	SET 4	
11	SCREW BOLT	2	SET 4	10Nm
12	TAPER NUT	2	SET 4	
13	SPACER	2	SET 4	
14	C-RING	2	SET 3	
15	C-RING	2	SET 3	
16	SPACER, 10x17x6	2	SET 2	
17	PIVOT AXLE, M12	2	SET 3	12Nm
18	M8 THREAD AXLE	1	SET 3	
19	LINK AXLE	2	SET 3	11Nm
20	SPACER, 15x19x2t	2	SET 3	
21	SPACER, 3MM	2	SET 3	
22	HANGER	1	SRAM UDH	
23	HANGER NUT	1	SRAM UDH	4Nm
24	SCREW BOLT M6X16L	2	099.13006	8Nm
25	LOWER LINK SHOCK BOLT	1	SET 2	16Nm
26	MOTOR SPACER 6.8MM	1	SET 8	
27	MOTOR SPACER 16.8MM	1	SET 8	
28	MOTOR SPACER 4MM	1	SET 8	
29	MOTOR BOLT	5	SET 6	15Nm
30	MOTOR BOLT	1	SET 6	15Nm
31	PLUG COVER	1	099.22041	
32	PLUG SIDE HOLDER	1	099.22041	
33	SCREW BOLT	9		3Nm

ITEM No.	DESCRIPTION	QTY.	PART NUMBER	TORQUE
34	LOWER EXT BES3 BATTERY BOLTS COVER/HOLDER	1	099.22044	
36	UPPER INT BES3 BATTERY BRACKET	1	099.22043	
37	UPPER EXT BES3 BATTERY BOLTS COVER/HOLDER		099.20071	
38	SCREW BOLT M5X20L	2	099.12132	6,5Nm
39	CABLE RUBBER	3	989.13010	
40	SEAT CLAMP 37MM	2	099.21029	
43	REAR FENDER	1	099.20075	
44	CHAINSTAY PROTECTOR	1	099.20017	
45	DISC MOUNT 200MM	1	099.20076	
46	CHAIN G. BACK SLIDER	1	SET 7	
47	UPPER GUIDE PLASTIC W/M5X20L BOLT	1	099.22010A	
48	CHAIN GUIDE PLATE	1	SET 7	
49	SCREW BOLT	2	SET 7	4Nm
50	SLIM SENSOR CLAMP	1	099.22042	
51	BEARING, 10x22x6 (6900V-2RS)	2	SET 1	
52	SHOCK BOLT	2	SET 2	8Nm
53	C-RING	2	SET 3	
54	MOTOR COVER, LEFT	1	099.20022	
55	MOTOR COVER, LOWER	1	099.22058	
56	MOTOR COVER, RIGHT	1	099.20023	
57	SCREW BOLT M4X10L	4	099.15032	4Nm
58	MIDDLE STAY PROTECTOR	1	099.20077	
59	ULTRA LOW HEAD BOLT M4X12L	4	099.22078	3Nm
60	FIDLOCK COVER	1	099.22040	
61	SCREW BOLT	2		0,8Nm
62	SCREW BOLT M6x10L (RS)	1		
63	REAR AXLE (2020/2021) 12x148 P.1.75 L180	1	112.90022	
	REAR AXLE (2022) 12x148 P.10 L180	1	112.90027	
64	ROTOR MAGNET SPEED SENSOR BOSCH	1	124.20401	
65	SPONGE MOTOR PROTECTOR	1	099.20086	

DETAIL 01

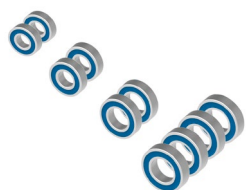


DETAIL 02



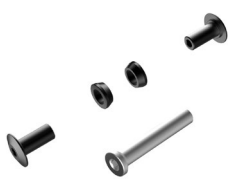
SET 1

ZERO BEARING KIT 22



SET 2

SHOCK HARDWARE KIT 13



SET 3

UPPER LINK KIT 27



SET 4

LOWER LINK KIT 24



SET 7

CHAIN GUIDE PLATE



PART NUMBER	DESCRIPTION	COMPONENTS
099.20103	SET 1: ZERO BEARING KIT 22	BEARING 6901V-2RS, 12X24X6 (x2) / BEARING 6902V-2RS, 28x15x7 (x2) / BEARING 6903V-2RS, 30x17x7 (x4) / BEARING 6900V-2RS, 10x22x6 (x2)
099.20201	SET 2: SHOCK HARDWARE KIT 13	SHOCK BOLT (x2) / SPACER, 10x17x6 (x2) / LOWER LINK SHOCK BOLT (x1)
099.20302	SET 3: UPPER LINK KIT 27	C-RING (x2), C-RING (x2), PIVOT AXLE, M12 (x2), M8 THREAD AXLE (x1), LINK AXLE (x2), SPACER, 15x19x2t, (x2), SPACER, 3MM (x2), C-RING (x2)
099.20401	SET 4: LOWER LINK KIT	SPACER, 15x27x2 (x4), MAIN PIVOT AXLE, 17X60 (x2), SPACER, 17x22x30L (x2), SCREW BOLT (x2), TAPER NUT (x2), SPACER (x2)
099.20079	SET 6: MOTOR BOLTS SET	MOTOR BOLT (x5), MOTOR BOLT (x1)
099.20081	SET 7: CHAIN GUIDE PLATE + BOLTS	CHAIN G. BACK SLIDER (x1), CHAIN GUIDE PLATE (x1), SCREW BOLT (x2)
099.20080	SET 8: MOTOR SPACERS	MOTOR SPACER 6.8MM (x1), MOTOR SPACER 16.8MM (x1), MOTOR SPACER 4MM (x1)
989.20022	POLYESTER SLEEVE. HOSE PROTECTOR IM	
099.21012	LOWER SHOCK BOLT - STEEL	
099.18012	REAR DISC MOUNT 203MM	
099.00055	HANGER M068 + NUT (2020/2021)	HANGER (x1), HANGER NUT (x1)